

Pinal County's Transportation Strategy

“Transportation White Paper”

Authored by Greg Stanley, P.E., Public Works Director
Presented by AJ Blaha, P.E., Deputy Public Works Director

February 17, 2011



P I N A L • C O U N T Y
wide open opportunity



Pinal County Vision & Mission

- Vision
 - Pinal County Government provides progressive & proactive leadership in the areas of economic development, state-of-the-art technologies, growth management & public services to promote healthy & safe communities.
- Mission
 - Pinal County Government protects & enhances its citizens' quality of life by providing public services in an ethical, efficient & responsible manner delivered by a motivated, skilled & courteous workforce.



P I N A L • C O U N T Y
wide open opportunity

The Problem



- Multiple Transportation Priorities
- Limited Transportation Funding



PINAL • COUNTY
wide open opportunity

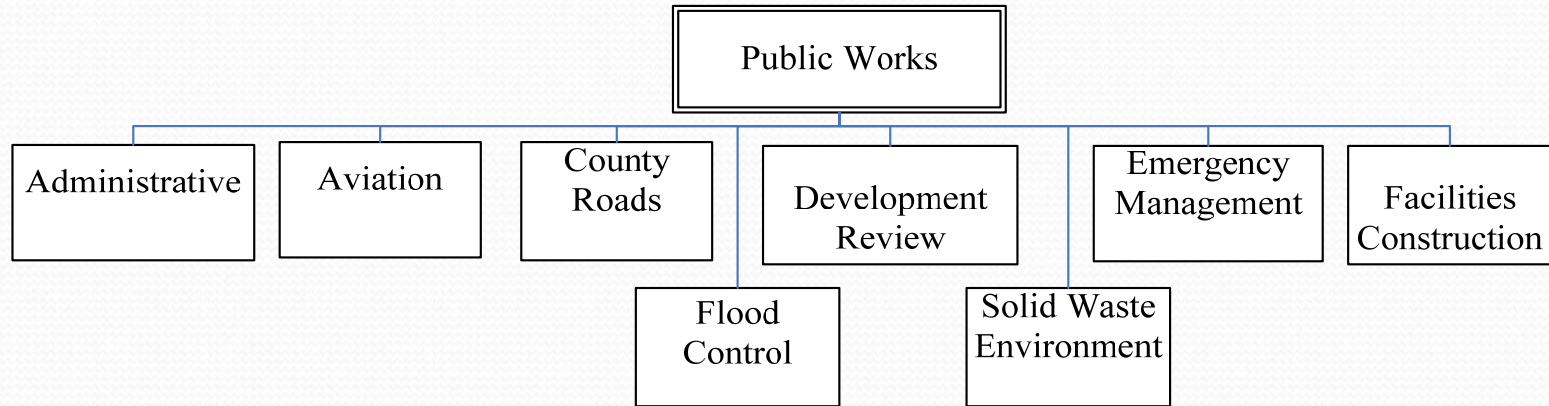
More Considerations for Pinal County

- Air Quality Non Attainment Status
 - Dirt Roads & PM-10
- May 2010 Resident Survey
 - Multi-modal transportation alternatives fall below national & regional standards
- Regional Transportation Network
 - Fiscally constrained regional transportation plan
- Economic Development
 - Critical transportation infrastructure



P I N A L • C O U N T Y
wide open opportunity

Public Works Oversight

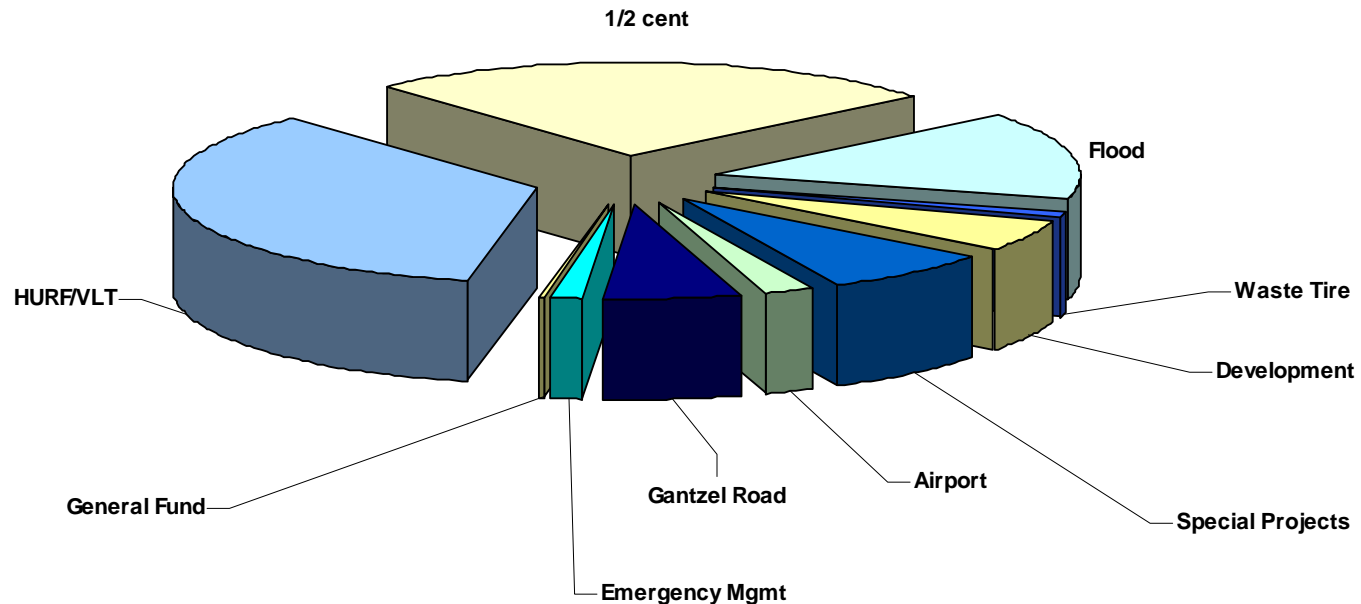


- Total Public Works Budget: \$55,191,689
- 192 -FTE (2010)



Fiscal Year 2010/2011 Budget

FY 2011 Adopted Expenditure Budget by Fund



- Total Public Works Budget:
 - \$55,191,689
- Operation & Maintenance Budget:
 - \$18,692,636 (HURF/VLT)



PINAL COUNTY
wide open opportunity

Customer Service Needs

Increasing

- 999 of paved miles
- 1101 of gravel miles
- Pavement Preservation
- Maintenance (Sweeping/Grading/Mowing/Patching)
- Traffic Signals/Signs/Striping
- 10 Public Works maintenance facilities:
 - Casa Grande, Hidden Valley, Arizona City, Oracle, Riverside, Florence, Coolidge (2), Apache Junction, Adamsville Road (Recycling)



P I N A L • C O U N T Y
wide open opportunity



The Solution



PINAL • COUNTY
wide open opportunity



Recommended Result

- Clarify priorities for staff to use when making recommendations for limited transportation budgets
- Refocus transportation priorities on major projects



The Strategy

- Refine strategic priorities
 1. Maintain focus on roadway safety
 2. Reduce congestion on the arterial network
 3. Increase paved mileage with a greater emphasis on regionally significant routes
- Refocus on LONG TERM RESULTS
- Maintain current funding for Public Works operations
- Develop a coordinated communication program to address concerns from Resident Survey



Method for Measuring

- Continue to measure pavement conditions, congestion & safety
 - Letter grades based on national standards for pavement conditions & congestion
 - County developed standards for safety & gravel road conditions
- Reflect what is most important to the Board of Supervisors



Conclusion

- Recommended Strategic Priority for Transportation
 - By 2016, Pinal County residents & the traveling public will benefit from an expanded multi-modal transportation network as evidenced by:
 - $_$ % of lane miles paved that are identified as top priority Regionally Significant Routes (RSR)
 - (# of lane miles paved that are identified as top priority RSR / total # of lane miles paved)



P I N A L • C O U N T Y
wide open opportunity

Fiscal Year 2011/2012

- Approved Strategic Priority for Transportation
 - By 2016, Pinal County residents & the traveling public will benefit from an expanded multi-modal transportation network as evidenced by:
 - 50% of the roads that are paved will be roads that are top priority Regionally Significant Routes (RSR)
 - Achieve a 3-year, ongoing average of 99.7% healthy days for PM-10 (U.S. Environmental Protection Agency standard for PM-10)



PINAL • COUNTY
wide open opportunity



Questions?



PINAL • COUNTY
wide open opportunity