



Pinal County
Community Forum
Tuesday, September 21, 2010



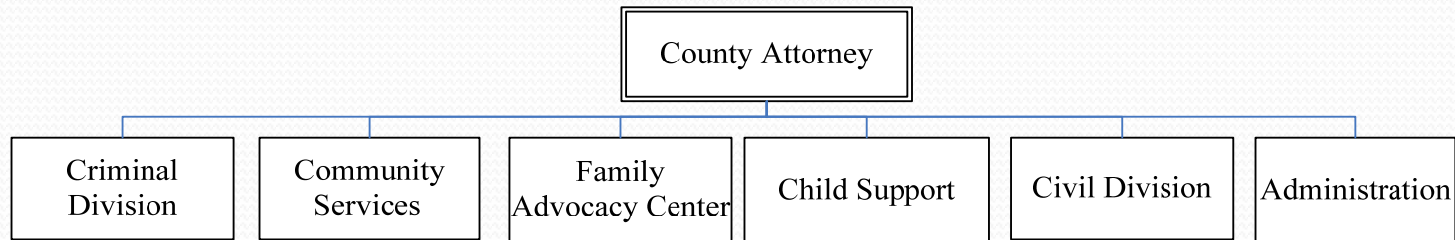
PINAL • COUNTY
wide open opportunity

County Attorney



PINAL • COUNTY
wide open opportunity

County Attorney



- Mandate:
Arizona Constitution: Art. 4, Sec. 3, and
Arizona Revised Statutes: Title 11, Chap. 3; various provisions of Title 13
(Criminal Code) and other Titles.
- General Fund Budget: \$7,086,823
- Other Funds: \$5,149,192
- Total Budget: \$12,236,015
- 149-Positions



P I N A L • C O U N T Y
wide open opportunity



County Attorney

Criminal Division

The Criminal Division is charged with prosecuting all felonies and misdemeanors committed in unincorporated areas of Pinal County.

The rural and decentralized nature of Pinal County is one of our major challenges in applying the law since resources are limited.



P I N A L • C O U N T Y
wide open opportunity

County Attorney

Community Services

This division consists of:

- Victim Advocacy
- Victim Notification
- Victim Compensation
- Adult Diversion
- Bad Check Program



P I N A L • C O U N T Y
wide open opportunity

County Attorney

Family Advocacy Center

The Center's goal is to conduct effective and comprehensive investigations of sexual abuse cases and cases of crimes against children.

County Attorney's Office employees coordinate the efforts of multiple agencies to gather forensic evidence and testimony from victims of sexual crimes.

The participants:

- County Attorney's Office
- Pinal County Sheriff's Office
- Eloy Police Department
- Casa Grande Police Department
- Child Protective Services
- St. Joseph's Medical Center



P I N A L • C O U N T Y

wide open opportunity

County Attorney Child Support

This division collects child support and establishes orders for child support and paternity. Without this service more than 12,500 single parents, mostly single mothers, would have no local legal support to collect child support.

Without such support the burden on the government's social services would be significant. The division collected \$21.6 million last fiscal year for a 3.74% growth from the year before.



P I N A L • C O U N T Y
wide open opportunity

County Attorney Civil Division

The Civil Division represents and advises all county departments as well as the board of supervisors.

Lawyers in this group often represent the County Government in court in civil cases brought against or by the County.



P I N A L • C O U N T Y
wide open opportunity

County Attorney

Criminal					
	General Fund:	3,718,218	85% of program paid	Attorneys:	30
	Other Funds:	662,840	by General Fund	Investigators:	6
				Paralegals:	2
	Total Budget:	4,381,058		Support Staff:	15
	37% of Budget- all sources			Total Employees:	53



P I N A L • C O U N T Y
wide open opportunity

County Attorney

Community Services

General Fund: 1,152,244 59% of program paid
Other Funds: 803,596 by General Fund

Total Budget: 1,955,840

16% of Budget- all sources

Admin: 3
Advocates: 12
Support Staff: 9
Other: 5
Total Employees: 29



P I N A L • C O U N T Y
wide open opportunity

County Attorney

Family Advocacy Center

General Fund: 245,711 61% of program paid
Other Funds: 155,030 by General Fund

Total Budget: 400,741

3% of Budget- all sources

Admin: 2

Investigators: 1

Forensic Interviewer: 1

Total Employees: 4



P I N A L • C O U N T Y
wide open opportunity

County Attorney

Child Support				
General Fund:	119,512	5% of program paid	Attorneys:	4
Other Funds:	2,395,559	by General Fund	Admin:	2
			Support Staff:	28
Total Budget:	2,515,071		Total Employees:	34
21% of Budget- all sources				



P I N A L • C O U N T Y
wide open opportunity

County Attorney

Civil Division				
General Fund:	1,316,543	92% of program paid	Attorneys:	10
Other Funds:	110,452	by General Fund	Paralegals:	1
			Support Staff:	3
Total Budget:	1,426,995		Total Employees:	14
12% of Budget- all sources				



P I N A L • C O U N T Y
wide open opportunity

County Attorney

Administration

General Fund:	568,162	74% of program paid
Other Funds:	196,573	by General Fund
Total Budget:	764,735	

County Attorney:	1
Financial Service:	5
Records Retention/Reception Desk:	7
Information Technology:	2
Total Employees:	15

6% of Budget- all sources



P I N A L • C O U N T Y
wide open opportunity

County Attorney

For more information please visit our Web site:

www.pinalcountyz.gov/CountyAttorney



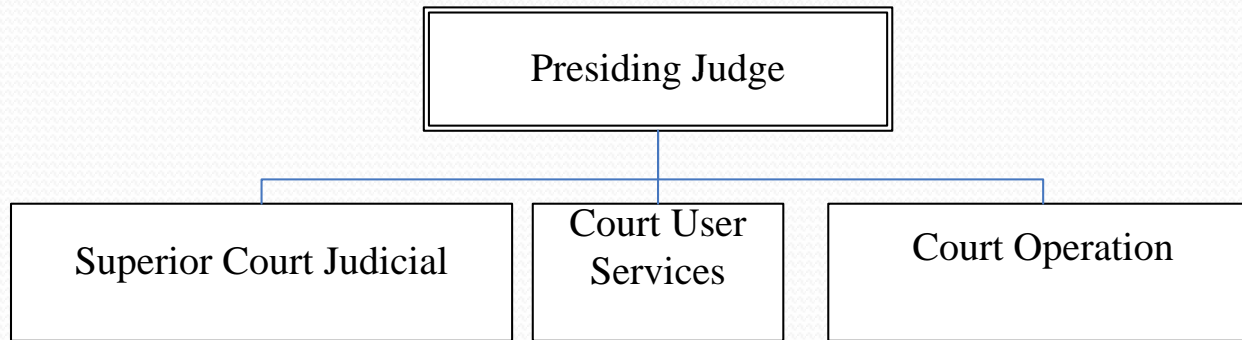
PINAL • COUNTY
wide open opportunity

Courts



PINAL • COUNTY
wide open opportunity

Superior Court

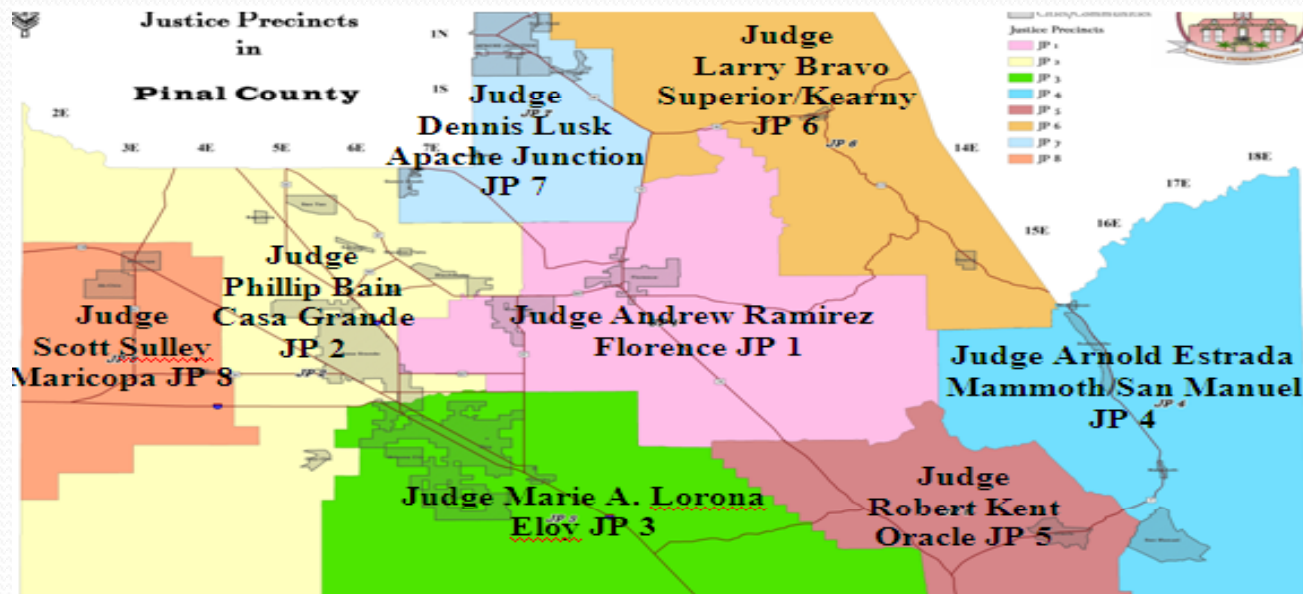


- Mandate: Arizona Constitution, Article VI, Section 14, A.R.S. 12-123, 12-241-242, 21-301, 21-331, 21-101-351, 21-401-416, 12-223, 21-411
- General Fund Budget: \$7,559,391 (excludes Constables)
- Other Funds: \$3,790,986
- Total Budget: \$11,350,377
- 101.5-FTE



P I N A L • C O U N T Y
wide open opportunity

Justice Courts

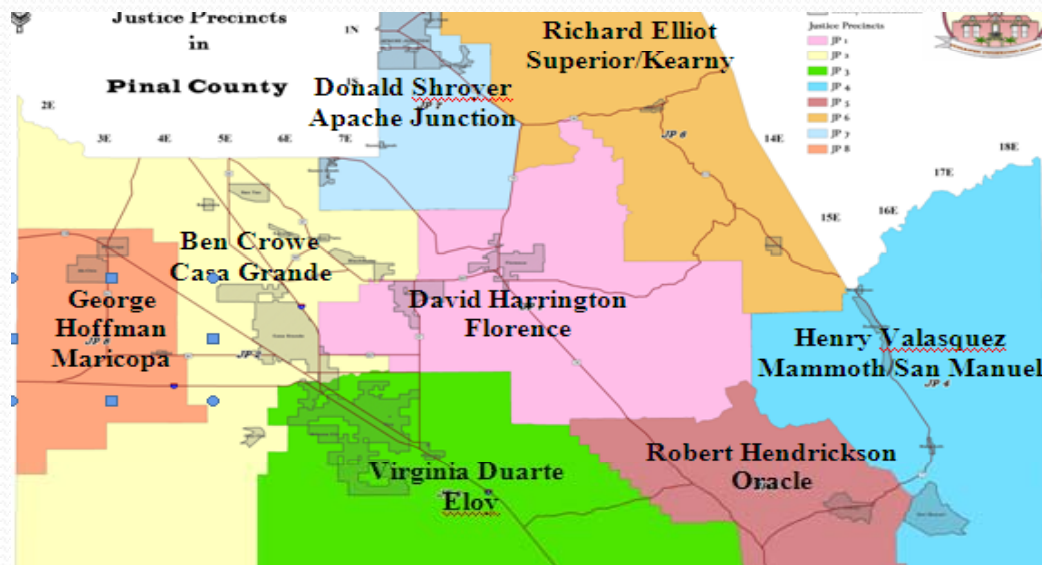


- Mandate : A.R.S. 22-301
- General Fund Budget: \$2,492,959
- Other Funds: \$780,125
- Total Budget: \$3,273,084
- 60-FTE

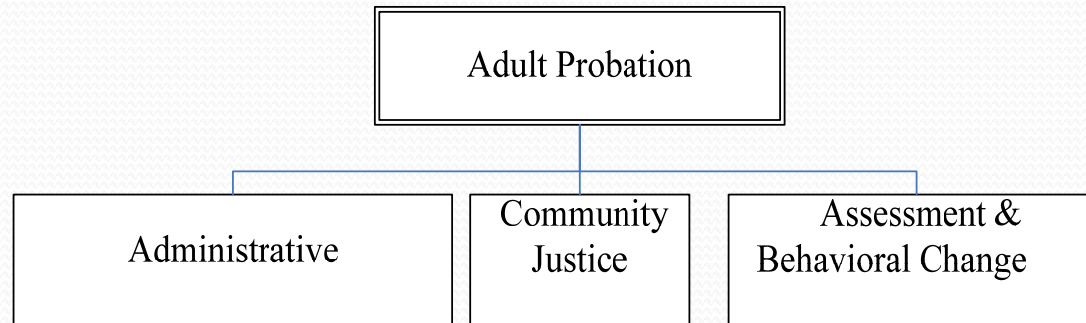


PINAL • COUNTY
wide open opportunity

Constables



Adult Probation



- Mandate: A.R.S. 12-299, 12-251, 12-253, 13-701, 13-914, 13-4410, 13-4424, 13-3967, 13-3967, 13-916, 13-901, 12-269, 13-913-920
- General Fund Budget: \$1,443,283
- Other Funds: \$3,597,584
- Total Budget: \$5,040,867
- 80-FTE



PINAL • COUNTY
wide open opportunity

Pretrial Services

- Provide Release Reports to the Court
- Supervise defendants place on Pretrial Supervision



P I N A L • C O U N T Y
wide open opportunity

Presentence Services

- Interview defendant
- Complete background investigation and assessments
- Submit Presentence Report to the court



P I N A L • C O U N T Y
wide open opportunity

Field Supervision

- Standard Probation Supervision
- Sex Offender Supervision
- Domestic Violence Court
- Adult Drug Court
- Intensive Probation Supervision



P I N A L • C O U N T Y
wide open opportunity

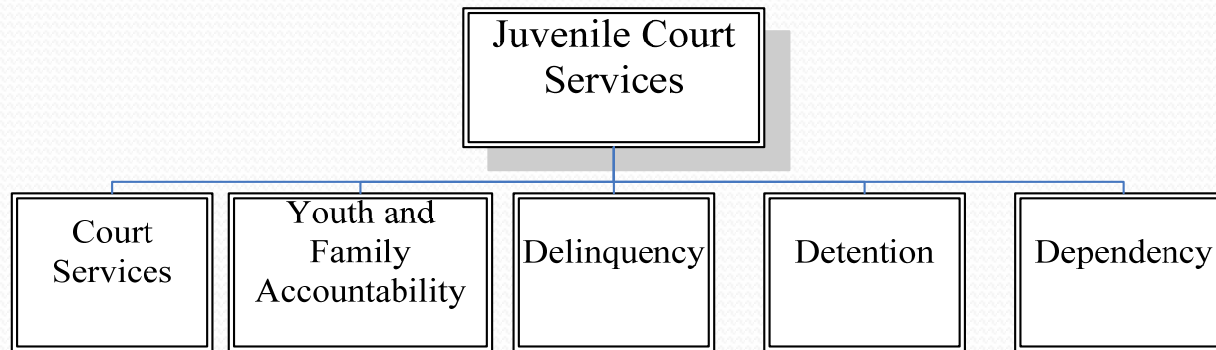
Strategic Goals

- Reduce Recidivism Rates
- Increase Effectiveness of Probation Services
- Probationer Treatment and Education



PINAL • COUNTY
wide open opportunity

Juvenile Court Services



- Mandate : A.R.S. 36-601, 36-136, 8-342, 8-305, 8-272, 8-273, 8-341.01, 8-321, 8-352, 12-253, 36-601
- General Fund Budget: \$5,559,253
- Other Funds: \$3,274,966
- Total Budget: \$8,834,219
- 144.5-FTE



PINAL • COUNTY
wide open opportunity

Juvenile Court Services

- **Court Services**

- Manage cases from arrest to disposition
- Determine Diversion appropriate cases
- Prepare background reports for the court
- Monitor House arrest

- **Youth and Family Accountability**

- Assist Victims
- Guide Community Restitution
- Coordinate Restorative Justice Panels
- Collect court-ordered assessments

Juvenile Court Services

- **Delinquency**

- Supervise Juveniles on Probation
- Reward and Sanction behavior
- Specialize in Drug Court and Teen Parents
- Facilitate treatment progress

- **Detention**

- Ensure Safety and Security
- Improve youth behavior
- Manage physical and mental health
- Improve education and life skills



P I N A L • C O U N T Y
wide open opportunity

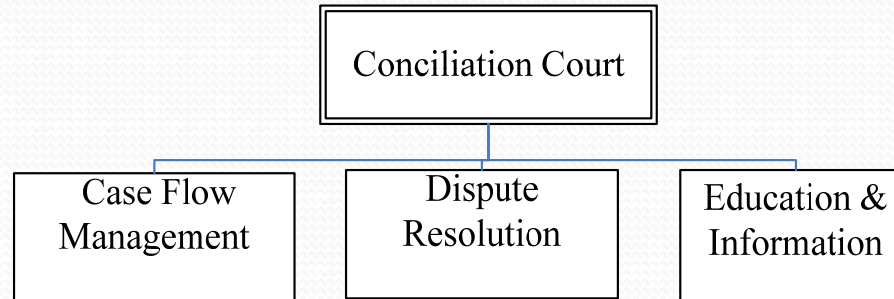
Juvenile Court Services

- **Dependency**
 - Manage Case flow for the Court
 - Mediate Family/child issues with parties
Provide and train CASA: Child Advocates
 - Consolidate hearings to an Integrated Family Court



P I N A L • C O U N T Y
wide open opportunity

Conciliation Court



- Mandate: A.R.S. 25-351-355, 25-381-01-381.24, AZRFLP Rule 66-75
- General Fund Budget: \$494,086
- Other Funds: \$195,710
- Total Budget: \$689,796
- 12-FTE



P I N A L • C O U N T Y
wide open opportunity

Conciliation Court

New Cost & Time Reduction Strategies

- Decree Assistance
- Early Resolution
- Limited Focus Assessment
- High Conflict Parent Classes



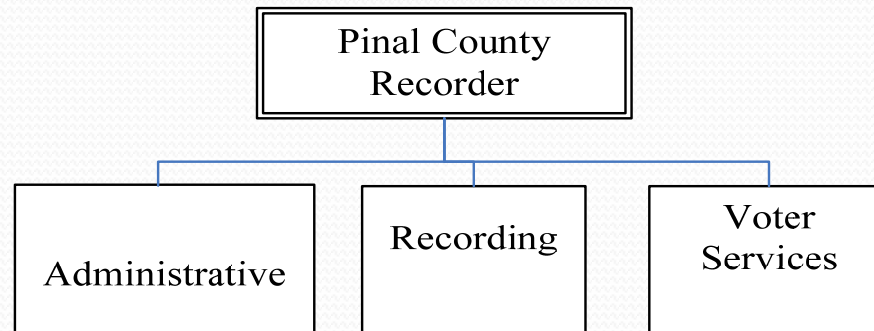
P I N A L • C O U N T Y
wide open opportunity

Recorder



PINAL • COUNTY
wide open opportunity

Recorder



- Mandate : A.R.S. Title 11 Article 3 Beginning with ARS 11-461 through ARS 11-487.06, Title 16, Title 19
- General Fund Budget: \$1,357,484
- Other Funds: \$739,000
- Total Budget: \$2,096,484
- 33.5-FTE Positions-26 Currently Filled



P I N A L • C O U N T Y
wide open opportunity

Recorder's Office Purpose

- County Recorder Offices exist as a service to county property owners to ensure their property ownership is forever verifiable. The existence of mortgage and lien recorded documents provide that permanent record verification, as well. Other types of recorded documents are equally as valuable; all documents must be permanently archived and retrievable.



P I N A L • C O U N T Y
wide open opportunity

Recorder's Office Locations

- 3 Full-Service Offices plus county website information
- Apache Junction County Complex
- Casa Grande County Complex
- Main Office Florence County Complex
- Pinal County Website www.pinalcountyz.gov for information and research



P I N A L • C O U N T Y
wide open opportunity

Recorded Document Dept.

- ❑ All documents must be recorded the day they are received
Over 100,000 documents recorded annually
- ❑ A recorded document image must be archived as a permanent record and retrievable.
- ❑ Images archived on microfilm as required by AZ Revised Statutes.
- ❑ Documents with sensitive information are not available through the internet.
- ❑ A certified copy of a document from the Recorder's office is legally equal to the original recorded document.



P I N A L • C O U N T Y
wide open opportunity

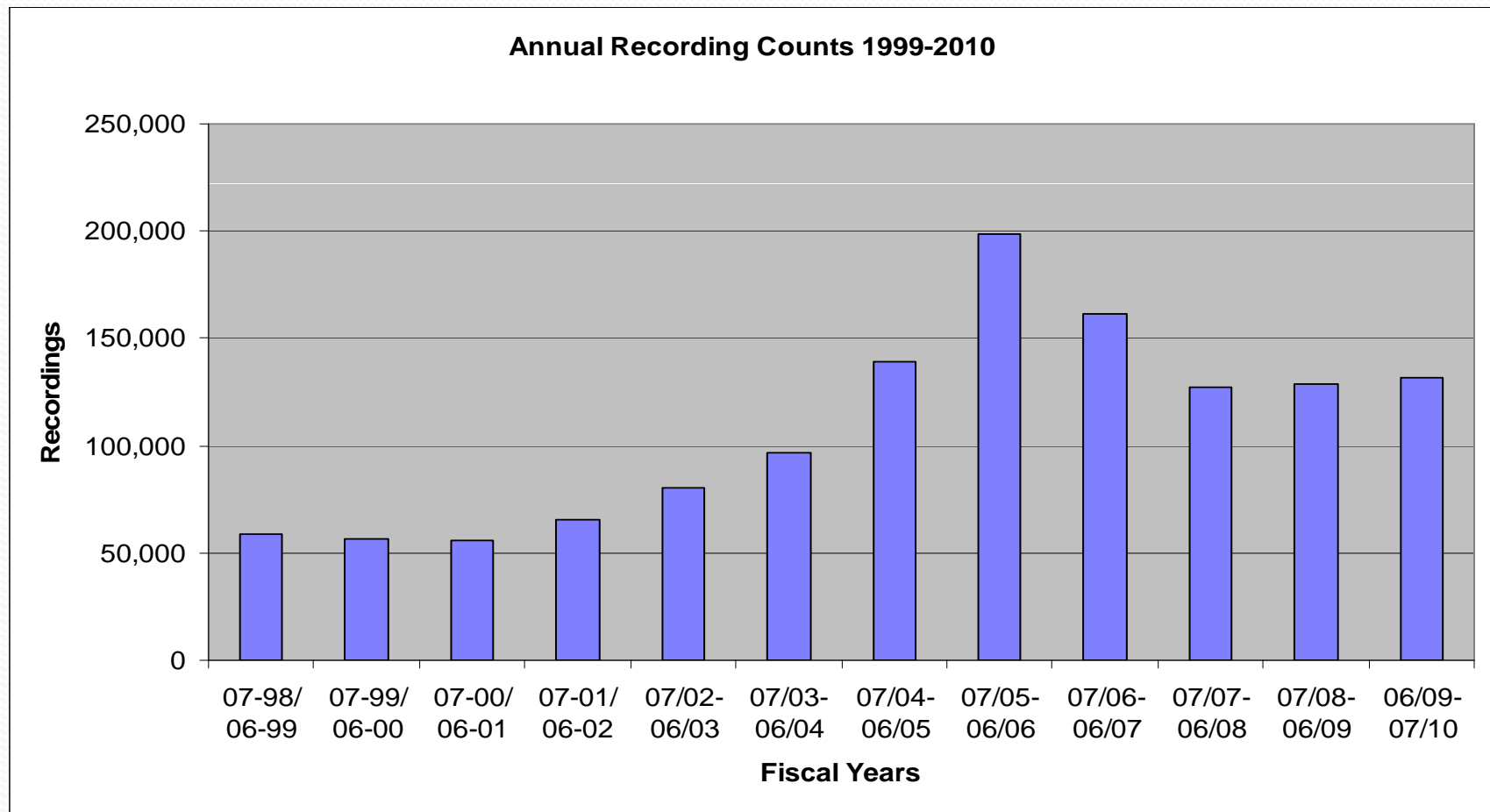
Recorded Documents

- Types of documents recorded in the Recorder's Office
 - Deeds
 - Deeds of Trust (Mortgages)
 - Released (Paid-off) Deeds of Trusts (Mortgages)
 - Liens against the property
 - Released liens (Paid off liens)
 - Judgments against the property
 - Right of Ways affecting real property
 - Subdivision Plat Maps
 - Surveys
 - Other documents related to property ownership



P I N A L • C O U N T Y
wide open opportunity

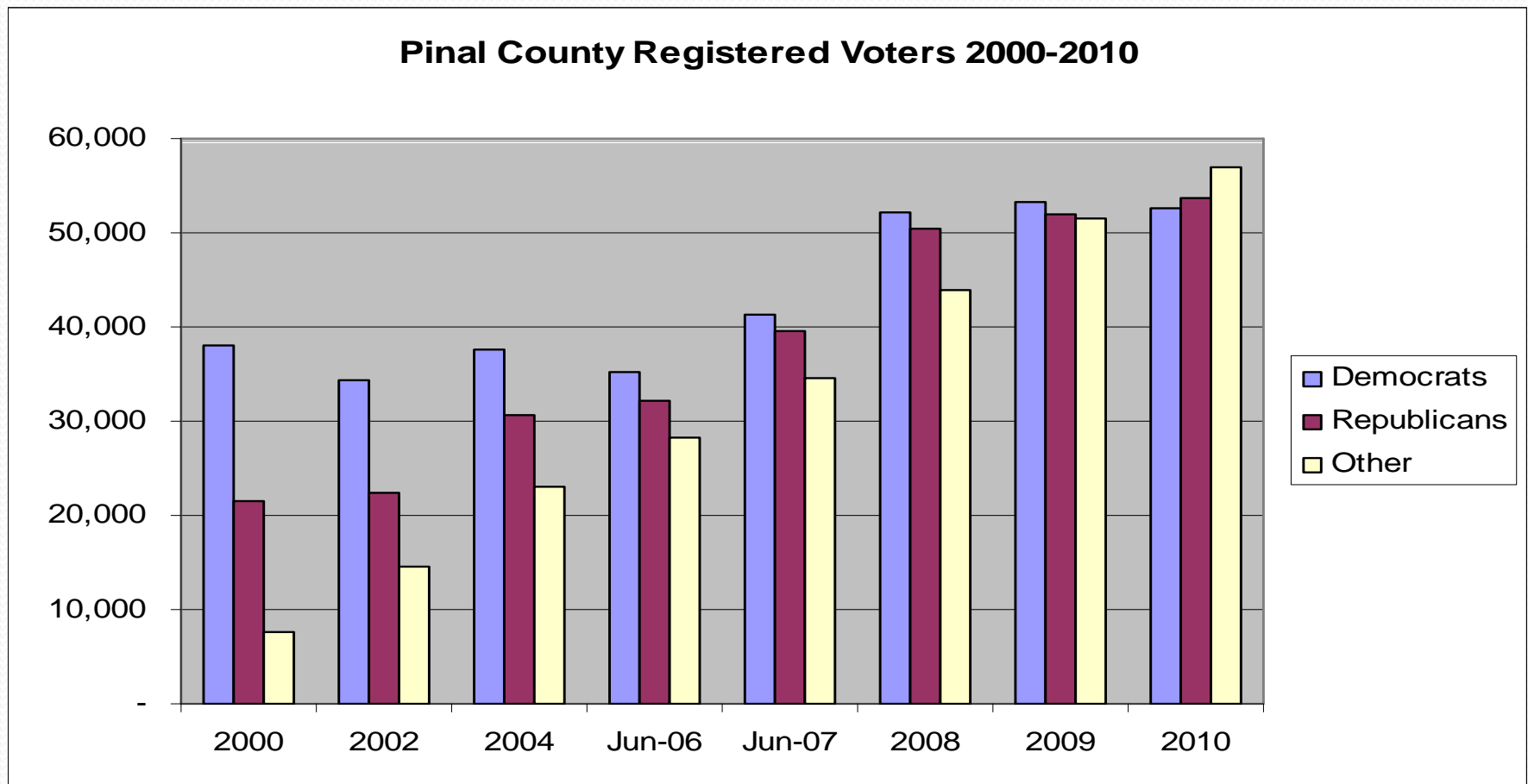
Annual Recordings 1999-2010



Recorder's Voter Registration Services

- Voter Registration Department work aligns with AZ Secretary of State Office-with daily communications
- Voter Registration Identification provided to each voter
- Files must be updated according to AZ Revised Statutes
- Laws dictate acceptance of voter registration forms:
Form must provide adequate data to prove citizenship
Absence of that data is mandatory rejection of the form
- Letters provided to rejected voter registration applicants
New form included for resubmitting form correctly

Registered Voters 2000-2010



Recorder's Early Voting Services

- Early Voting Option provided for every election
- Permanent Early Voters automatically receive early ballot for every election affecting their precinct
Primary election early ballot mailing requires voter to pre-select political party ballot through Recorder's Office
- There are currently 45,000+ Permanent Early Voters
Approximately 90% of early ballot voters vote!
- IF early ballot is returned accurately, timely and signed
IT WILL ALWAYS COUNT



P I N A L • C O U N T Y
wide open opportunity

Recorder's Office Wrap-up

- Office exists as a valuable public benefit
- Recorder and Staff are here to serve the public
- Services available in Apache Jct., Casa Grande, Florence and on the County website
- Need additional information? Call us at 520-866-6830 or email us:
recorder@pinalcountyyaz.gov or
Laura.Dean-Lytle@pinalcountyyaz.gov



P I N A L • C O U N T Y
wide open opportunity



Pinal County
Community Forum
Tuesday, September 21, 2010



PINAL • COUNTY
wide open opportunity